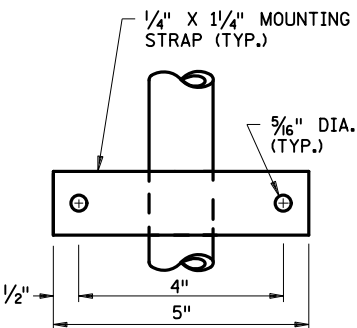
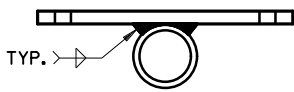


WOOD FILLER BOARD FASTENED TO MOUNTING STRAPS USING FOUR 1/4" DIAMETER X 2 1/2" LONG CARRIAGE BOLTS.

SECTION A-A



TOP VIEW

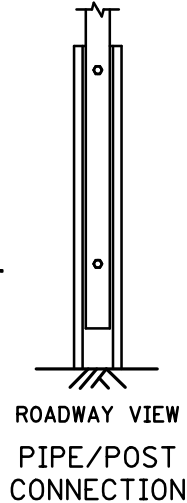


END VIEW

MOUNTING STRAP

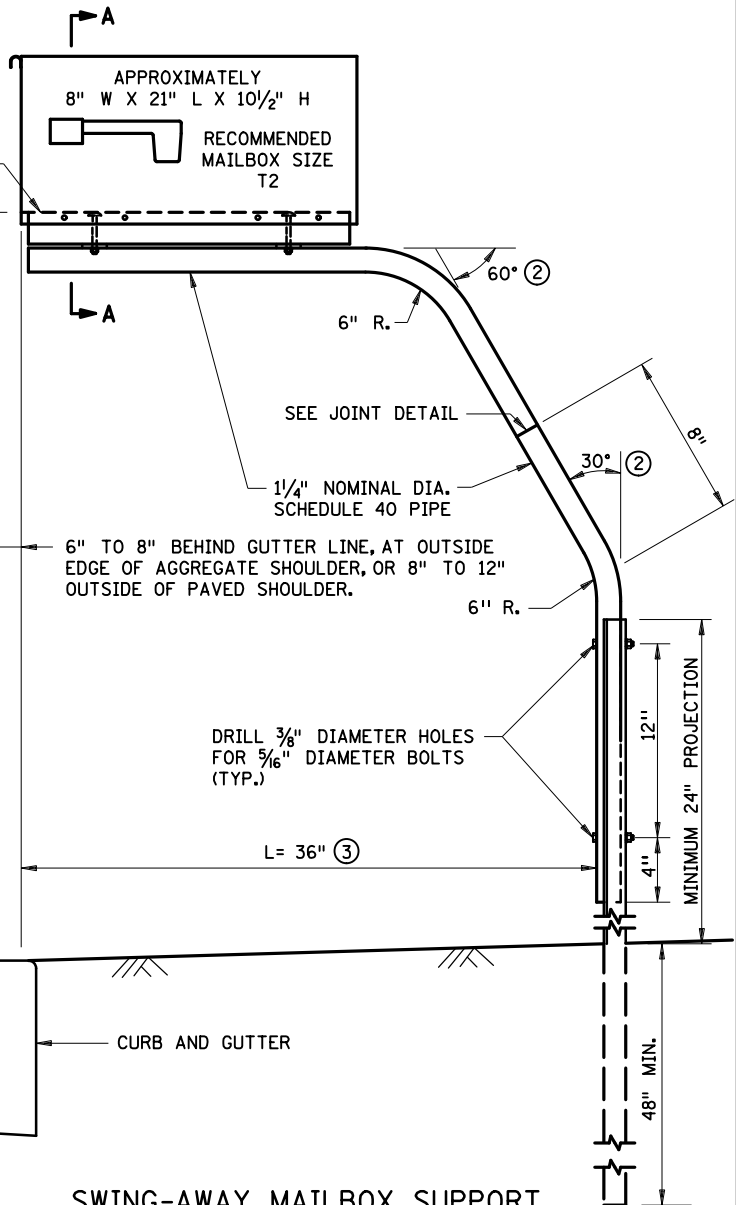


TOP VIEW



ROADWAY VIEW
PIPE/POST CONNECTION

H = 41" TO 45" FROM DRIVING SURFACE, URBAN AND RURAL ①



SWING-AWAY MAILBOX SUPPORT

NOTES:

STAKE MAILBOX LOCATIONS BEFORE INSTALLATION FOR PROPER HEIGHT AND DISTANCE FROM THE ROADWAY. ONCE STAKED, THE INSTALLER MUST NOTIFY THE ENGINEER AND THE POST OFFICE. THE ENGINEER AND THE POSTMASTER SHALL APPROVE THE STAKED LOCATIONS PRIOR TO FINAL INSTALLATION.

THE MINIMUM SPACING (CENTER TO CENTER) BETWEEN MULTIPLE MAILBOX SUPPORTS SHALL BE EQUAL TO THE HEIGHT OF THE MAILBOX SUPPORT.

OTHER MAILBOX SUPPORT DESIGNS MAY BE USED IF THEY SATISFY NCHRP REPORT 350 OR MASH CRITERIA IN ACCORDANCE WITH FHWA ACCEPTANCE LETTER, MEET MINNESOTA RULES 8818 AND U.S. POST OFFICE RECOMMENDATIONS AND ARE IN COMPLIANCE WITH MNDOT REQUIREMENTS WHICH MAY INCLUDE THE FOLLOWING (REQUIRED ON TRUNK HIGHWAYS):

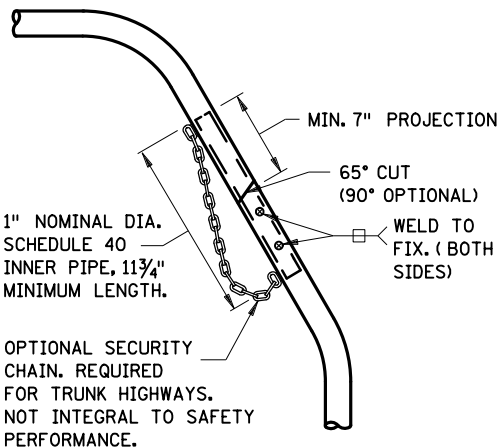
PIPE SHALL CONFORM TO SPEC. 3362, SCHEDULE 40 OF ASTM A53/A53M.

ALL FASTENERS SHALL CONFORM TO SPEC. 3391.

PIPES, POST, AND OTHER STEEL COMPONENTS SHALL BE GALVANIZED PER SPEC. 3392.

THE CONTRACTOR SHALL SEND THE SHOP DRAWINGS TO THE ENGINEER FOR APPROVAL. FOR QUESTIONS REGARDING DESIGN ELEMENTS AND BREAKAWAY FEATURES, CONTACT THE DESIGN STANDARDS UNIT.

- ① HEIGHT OUTSIDE THIS RANGE (H) MUST BE APPROVED BY LOCAL POSTMASTER.
- ② 45-DEGREE BENDS MAY BE USED AS AN OPTION.
- ③ A 48" OR 53" CANTILEVER LENGTH (L) MAY BE USED AS AN OPTION FOR NON-TRUNK HIGHWAY USE.



JOINT DETAIL

APPROVED 07-16-2021
Rom Sln
STATE DESIGN ENGINEER

STATE OF MINNESOTA
DEPARTMENT OF TRANSPORTATION
MAILBOX SUPPORT
SWING-AWAY TYPE

SPECIFICATION
REFERENCE
3362 3391
3392 3401

STANDARD
PLATE
NO.
9350B